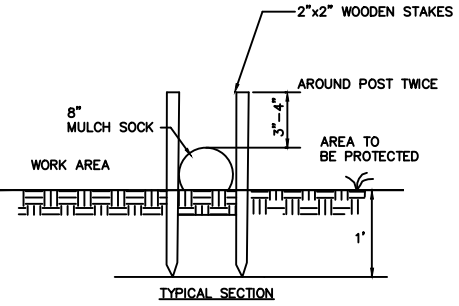
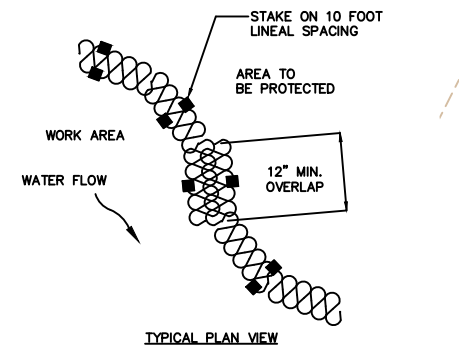


- ### REFERENCES
- DEEDS RECORDED AT THE ESSEX SOUTH REGISTRY OF DEEDS (THE "REGISTRY") IN BOOK 13094, PAGE 275 AND BOOK 13896, PAGE 223.
  - PLAN OF LAND IN ROWLEY; OWNER: THE TOMPKINS-DESJARDINS TRUST, BRUCE E. TOMPKINS AND STEPHANIE DESJARDINS, TRUSTEES; DATE: NOVEMBER 22, 2002; BY: JOHN J. DECOULOS; SCALE: 1"= 200'; RECORDED AT THE REGISTRY IN PLAN BOOK 364 AS PLAN 74.
  - DEFINITIVE PLAN OF LAND IN ROWLEY, COUNTRY CLUB ESTATES; THE TOMPKINS-DESJARDINS TRUST, BRUCE E. TOMPKINS AND STEPHANIE DESJARDINS, TRUSTEES; REVISED DATE: APRIL 21, 2000; BY: JOHN J. DECOULOS; SCALE: 1"= 50'; RECORDED AT THE REGISTRY IN PLAN BOOK 344 AS PLAN 31.
  - ELEVATIONS REFERENCED TO THE NORTH AMERICAN VERTICAL DATUM OF 1988 (NAVD88).
  - AERIAL PHOTOGRAMMETRY PROVIDED BY BLUESKY AERIAL, FLOWN APRIL 2021.
  - WETLAND RESOURCE BOUNDARIES AFFIRMED IN ORDERS OF CONDITIONS ISSUED BY THE ROWLEY CONSERVATION COMMISSION AS RECORDED AT THE REGISTRY IN BOOK 22527, PAGE 518 (MASSDEP FILE #63-0417); AND IN BOOK 24787, PAGE 275 (MASSDEP FILE #63-0482).
  - WETLAND RESOURCE BOUNDARIES ESTABLISHED BY WILLIAM MANUELL OF WETLANDS & LAND MANAGEMENT, INC. ON NOVEMBER 5, 2020.

- ### LEGEND
- BORDERING VEGETATED WETLAND (BVW)
  - 25 FOOT BUFFER TO BVW
  - 50 FOOT BUFFER TO BVW
  - PROPOSED EROSION CONTROL SOCK
  - PROPOSED PERCOLATION TEST
  - PROPOSED DEEP TEST HOLE

- ### NOTES:
- SOCK SIZE DEPICTED FOR GENERAL SIZE. GREATER SLOPES MAY REQUIRE LARGER SOCK.
  - COMPOST MATERIAL MAY BE DISPERSION ON SITE AT THE DISCRETION OF THE APPROVING AUTHORITY.
  - PRIOR TO SETTING THE SOCK REMOVE LOOSE FOREST LITTER, BRANCHES AND OTHER MATERIAL THAT MAY PREVENT THE SOCK FROM DIRECT CONTACT WITH GROUND.



**COMPOSTABLE FILTER SOCK**  
N.T.S.

**DECOULOS & COMPANY LLC**  
185 ALEWIFE BROOK PARKWAY  
CAMBRIDGE, MA 02138  
DECOULOS.COM  
617.489.7795

**PROPOSED SOIL TESTS**  
**LOT 24A (PARCEL 9-23-30)**  
**EMILY LANE, ROWLEY, MA**

DATE	8/8/23
SCALE	1"= 40'
DRWN	TCM
DES	GPB
CHKD	JJD
APRVD	JJD
FIGURE	1

