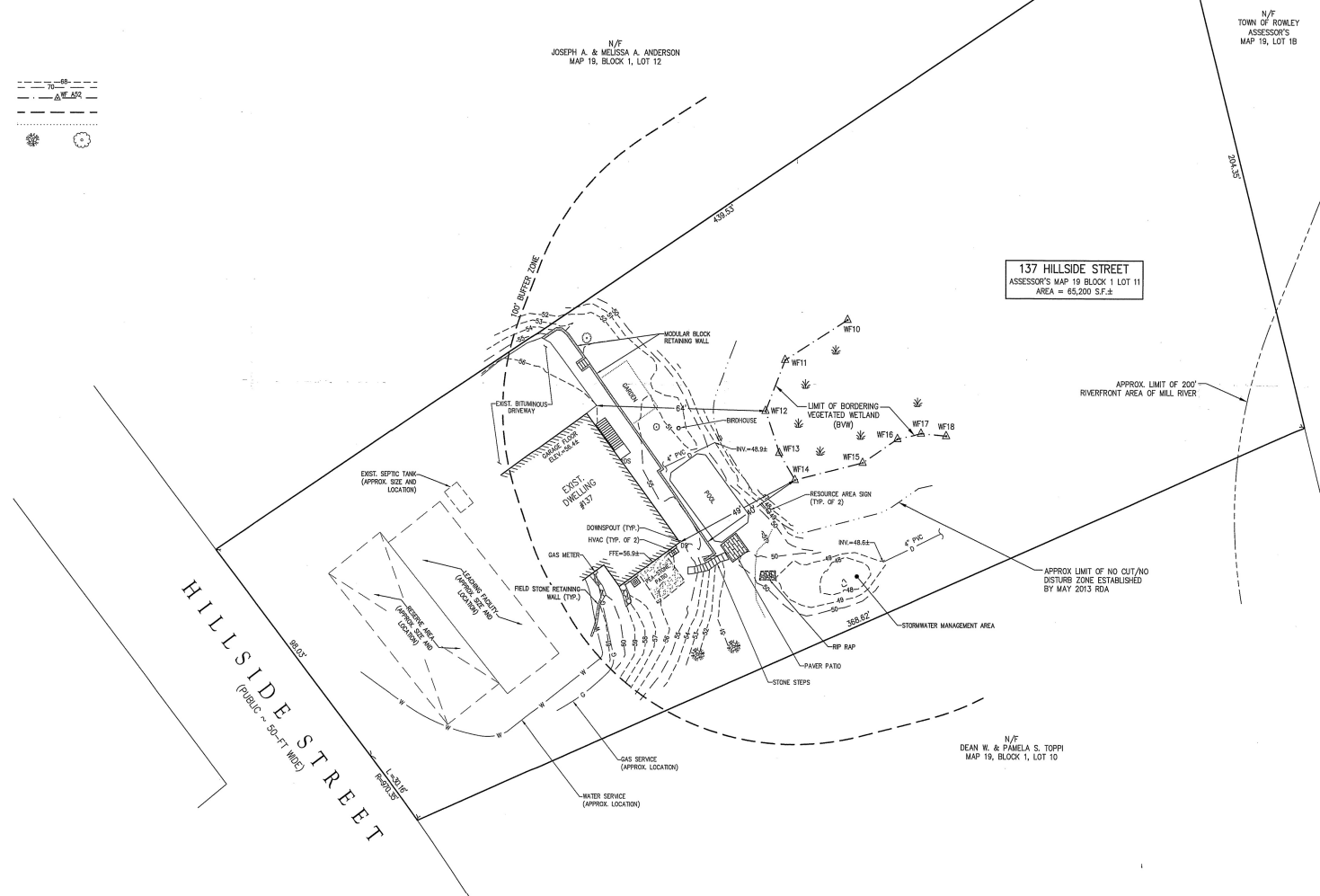
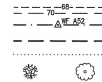


**GENERAL NOTES**

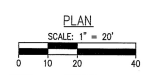
1. TOPOGRAPHIC INFORMATION IS THE RESULTS OF AN ACTUAL ON-THE-GROUND SURVEY PERFORMED BY THE MORIN-CAMERON GROUP, INC.
2. THE LOCATION AND/OR ELEVATION OF EXISTING UTILITIES AND STRUCTURES AS SHOWN ON THIS PLAN IS BASED ON RECORDS OF VARIOUS UTILITY COMPANIES AND WHERE POSSIBLE, MEASUREMENTS TAKEN IN THE FIELD. THIS INFORMATION IS NOT TO BE RELIED UPON AS BEING EXACT OR COMPLETE. THE LOCATION OF ALL UNDERGROUND UTILITIES AND STRUCTURES SHALL BE VERIFIED BY ANY PERSONS PERFORMING EXCAVATION ON THE PREMISES. CONTACT THE APPROPRIATE UTILITY COMPANY, ANY GOVERNING PERMITTING AUTHORITY, AND "DIGSAFE" AT LEAST 72 HOURS PRIOR TO ANY EXCAVATION WORK TO REQUEST EXACT FIELD LOCATION OF UTILITIES.
3. THIS PLAN HAS BEEN PREPARED TO ACCOMPANY A REQUEST FOR A CERTIFICATE OF COMPLIANCE TO THE ROWLEY CONSERVATION COMMISSION UNDER DEP FILE NUMBER #83-0876.
4. WETLAND RESOURCE AREA DELINEATED BY DEROSA ENVIRONMENTAL CONSULTING, INC., 167 MAIN STREET, PO BOX 718, ROWLEY, MA 01969 (978-948-7777) ON APRIL 3, 2018.
5. ELEVATIONS HEREON REFER TO NORTH AMERICA VERTICAL DATUM 1988 (NAV88) DATUM.

**LEGEND**

- TOPOGRAPHY
- BORDERING VEGETATED WETLAND
- 100' BUFFER ZONE
- EDGE OF LAWN
- TREE



**137 HILLSIDE STREET**  
ASSESSOR'S MAP 19 BLOCK 1 LOT 11  
AREA = 65,200 S.F.±



**The Morin-Cameron GROUP, INC.**  
CIVIL ENGINEERS, ENVIRONMENTAL CONSULTANTS  
137 HILLSIDE STREET, ROWLEY, MASSACHUSETTS 01969  
P: 978-948-7777 FAX: 978-948-7777



SURVEY BY: MGS	DATE: FEBRUARY 2, 2023
DRAFTED BY: D.P.	
CHECKED BY: JMM	
APPROVED BY: JMM	
SCALE: AS NOTED	

NO.	REVISIONS	DATE

**EXISTING CONDITIONS PLAN**  
ROWLEY, MASSACHUSETTS  
**137 HILLSIDE STREET**  
(ASSESSOR'S MAP 19, BLOCK 1, LOT 11)  
**ROCCO & LUCI DITULLIO**

CCAB  
DRAWING NO. **1 OF 1**