

# Missing Middle Housing



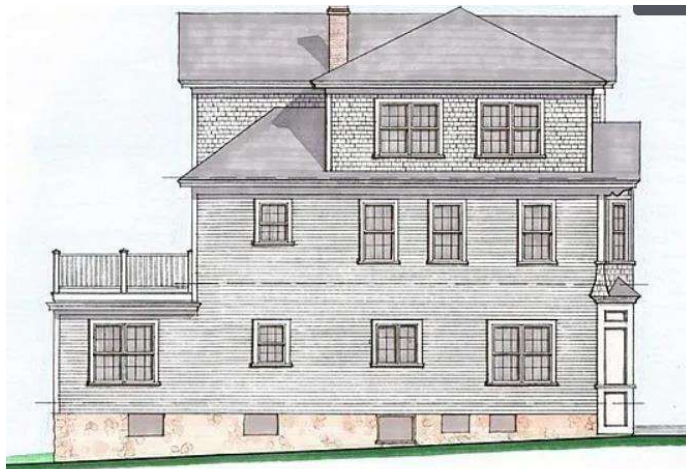
Copyright © 2020  
Opticos Design, Inc.





# North Andover: 127 Marblehead Street

- 4 condo units
- Reconstruction of a former structure
- Sits on 1/10 of an acre
- Meets density requirements of 15 units/acre



PROPOSED SOUTH (LEFT-SIDE) ELEVATION  
SCALE 1/4" = 1'-0"



PROPOSED EAST (FRONT) ELEVATION  
SCALE 1/4" = 1'-0"



# Lowell: Sutton Village Estates

- 45 townhouse condo units
- Under 2 acres
- Meets density requirements of 15 units/acre

