



FLOOR PLAN

UNIT TYPE

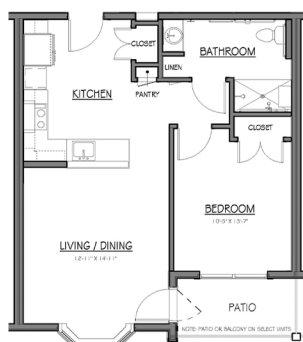
OF UNITS

HOUSEHOLD SIZE

RENT RANGE

INCOME RANGE PER HOUSEHOLD SIZE *

ONE BEDROOM



1 BEDROOM - 638 SF

16	1-2	30% of Gross Income	Below \$31,150 (1 person) Below \$35,600 (2 people)
29	1-2	\$1,336 - \$1,670	\$45,805 (min) - \$62,340 (max) (1 person) \$45,805 (min) - \$71,280 (max) (2 people)

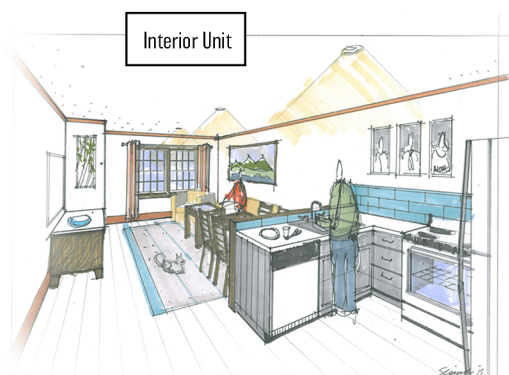
* RENT AND INCOME PER 2023 HUD LIMITS

RENT INCLUDES

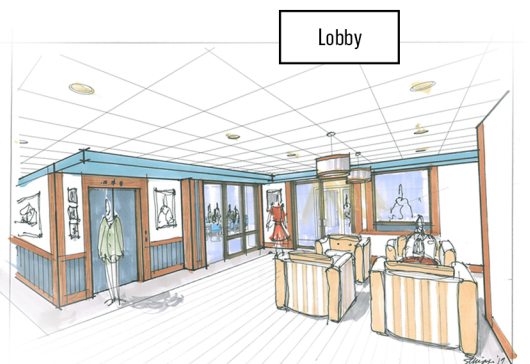
- Free PARKING onsite
- UTILITIES (heat, A/C, electricity, water)

PROPERTY FEATURES

- Laundry on each floor
- Heat and A/C
- Community gardens
- Computer room, library and common lounge areas
- Private porches/balconies (*select units*)
- Onsite walking paths adjacent to Conservation Land
- Tile bathrooms, large windows, wood-look vinyl plank floors, and new kitchen appliances
- Close to downtown Wenham, MBTA Commuter Rail, and Routes 97 and 128



Interior Unit



Lobby

Information Sessions will be held on April 3, 2023 (11am) and June 1, 2023 (6pm) on Zoom and in-person at the Hamilton-Wenham Public Library, 14 Union Street, Hamilton, MA

APPLICATION INFORMATION

Applications will be available starting February 1, 2023. To apply, print [HERE](#), request an application via email at applications@harborlighthomes.org or call 978-922-1305 to receive by mail. Applications also available for pick-up at Harborlight Homes, 283 Elliott Street, Beverly, MA 01915 (Monday - Friday, 9-4). FREE language assistance available for all applicants.

